

7.1 EPIC® CIRC ON LS1

Rundsteckverbinder / Circular connector / Connecteur circulaire

Technische Daten:

- Bemessungsstrom: 1 mm Kontakte: 7 A bei 1,0 mm²
2 mm Kontakte: 22 A bei 2,5 mm²
- Bemessungsspannung: 1 mm Kontakte: 250 V
2 mm Kontakte: 630 V
- Bemessungsstoßspannung: 1 mm Kontakte: 4 kV
2 mm Kontakte: 6 kV
- Verschmutzungsgrad: 3 (nach DIN EN 61984-2002,
Punkt 6.19.2.2)
- Überspannungskategorie: . . . 3
- Anschlussquerschnitte/-art: .1 mm Kontakt: 0,14 – 1,0 mm² crimp
AWG 18 – 24 crimp
2 mm Kontakt: 0,5 – 2,5 mm² crimp
AWG 14 – 20 crimp
- Steckzyklen: 500
- Temperaturbereich: -25 °C bis +125 °C
- Steckverbinder: nach DIN EN 61984
- Schutzart: IP 68 (10 h/1 m), das heißt hohe
Sicherheit gegen Eindringen von
Staub und Wasser

Technical Data:

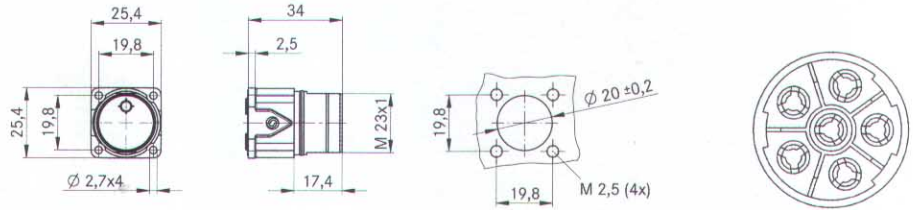
- Rated current: 1 mm contacts: 7 A for 1.0 mm²
2 mm contacts: 22 A for 2.5 mm²
- Rated voltage: 1 mm contacts: 250 V
2 mm contacts: 630 V
- Impulse rated voltage: 1 mm contacts: 4 kV
2 mm contacts: 6 kV
- Pollution degree: 3 (according to DIN EN 61984-2002,
6.19.2.2)
- Overvoltage category: 3
- Cross sections: 1 mm contacts: 0.14 – 1.0 mm² crimp
AWG 18 – 24 crimp
2 mm contacts: 0.5 – 2.5 mm² crimp
AWG 14 – 20 crimp
- Mating cycles: 500
- Temperature range: -25 °C – +125 °C
- Circular connectors: according to DIN EN 61984
- Protection class: IP 68 (10 h/1 m), highest protection
against the penetration of dust and
water

Caractéristiques techniques:

- Courant nominal : Contacts de 1 mm : 7 A à 1,0 mm²
Contacts de 2 mm : 22 A à 2,5 mm²
- Tension nominale : Contacts de 1 mm : 250 V
Contacts de 2 mm : 630 V
- Dimensionnement de choc : . Contacts de 1 mm : 4 kV
Contacts de 2 mm : 6 kV
- Degré de pollution : 3 (DIN EN 61984-2002, 6.19.2.2)
- Catégorie de surtension : . . 3
- Section/Type de raccord : . . Contact de 1 mm :
0,14 – 1,0 mm², à sertir
AWG 18 – 24, à sertir
Contact de 2 mm :
0,5 – 2,5 mm², à sertir
AWG 14 – 20, à sertir
- Cycles d'insertion : 500
- Plage de températures : . . . -25°C – +125°C
- Raccord : selon DIN EN 61984
- Classe de protection : IP 68 (10 h/1 m), c.-à-d. haute
sécurité contre la pénétration de
poussière et d'eau

7.1 EPIC® CIRC ON LS1

Rundsteckverbinder / Circular connector / Connecteur circulaire

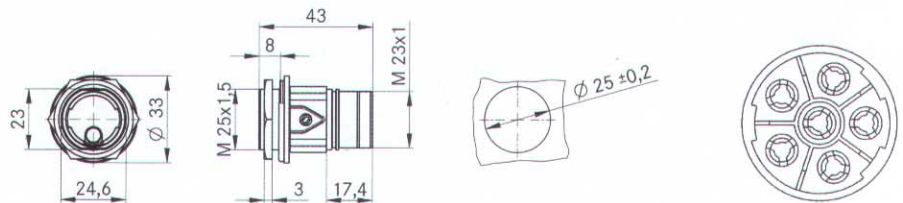


Bauform LS1 A1 für Stiftkontakte

Style LS1 A1 for male contacts

Modèle LS1 A1, contacts mâles

Artikel part article	Art.-Nr. part No. N° art.	Kontakte inklusive contacts inclusive contacts inclusive	Kabelklemmung clamping range raccordement	Polbild poles pôles	VPE packing unit conditionnement
LS1 A1	76003000	6	-	5 + PE	5
	76003510	-	-	5 + PE	20



Bauform LS1 G4 für Stiftkontakte

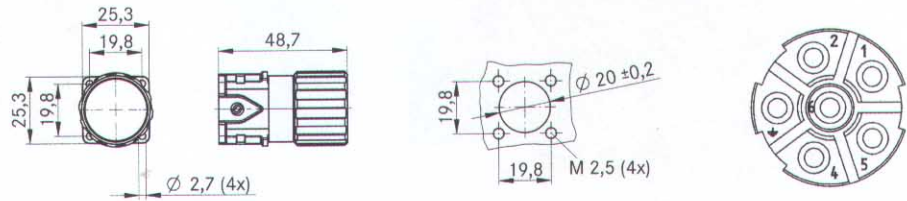
Style LS1 G4 for male contacts

Modèle LS1 G4, contacts mâles

Artikel part article	Art.-Nr. part No. N° art.	Kontakte inklusive contacts inclusive contacts inclusive	Kabelklemmung clamping range raccordement	Polbild poles pôles	VPE packing unit conditionnement
LS1 G4	76153100	6	-	5 + PE	5
	76153610	-	-	5 + PE	20

7.1 EPIC® CIRC ON LS1

Rundsteckverbinder / Circular connector / Connecteur circulaire

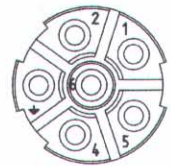
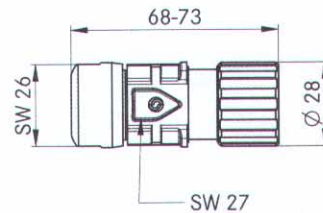


Bauform LS1 A6 für Buchsenkontakte

Style LS1 A6 for female contacts

Modèle LS1 A6, contacts femelles

Artikel part article	Art.-Nr. part No. N° art.	Kontakte inklusive contacts inclusive contacts inclusive	Kabelklemmung clamping range raccordement	Polbild poles pôles	VPE packing unit conditionnement
LS1 A6	76083000	6	-	5 + PE	5
	76083510	-	-	5 + PE	20

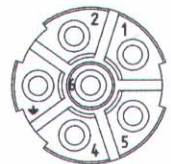
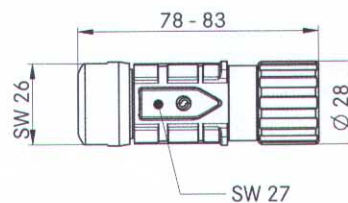


Bauform LS1 D6 kurz für Buchsenkontakte

Style LS1 D6 short version for female contacts

Modèle LS1 D6 courte, contacts femelles

Artikel part article	Art.-Nr. part No. N° art.	Kontakte inklusive contacts inclusive contacts inclusive	Kabelklemmung clamping range raccordement	Polbild poles pôles	VPE packing unit conditionnement
LS1 D6	73000028	6	8,5 - 11	5 + PE	5
	73000030	-	8,5 - 11	5 + PE	20
	73000029	6	10,5 - 15,5	5 + PE	5
	73000031	-	10,5 - 15,5	5 + PE	20



Bauform LS1 D6 für Buchsenkontakte

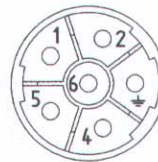
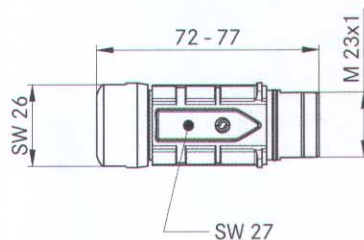
Style LS1 D6 for female contacts

Modèle LS1 D6, contacts femelles

Artikel part article	Art.-Nr. part No. N° art.	Kontakte inklusive contacts inclusive contacts inclusive	Kabelklemmung clamping range raccordement	Polbild poles pôles	VPE packing unit conditionnement
LS1 D6	73000004	6	8,5 - 11	5 + PE	5
	73000006	-	8,5 - 11	5 + PE	20
	73000005	6	10,5 - 15,5	5 + PE	5
	73000007	-	10,5 - 15,5	5 + PE	20

7.1 EPIC® CIRC ON LS1

Rundsteckverbinder / Circular connector / Connecteur circulaire

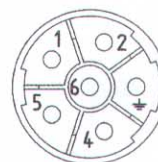
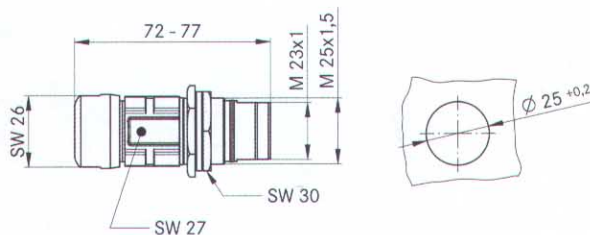


Bauform LS1 F6 für Stiftkontakte

Style LS1 F6 for male contacts

Modèle LS1 F6, contacts mâles

Artikel part article	Art.-Nr. part No. N° art.	Kontakte inklusive contacts inclusive contacts inclusive	Kabelklemmung clamping range raccordement	Polbild poles pôles	VPE packing unit conditionnement
LS1 F6	73000012	6	8,5 – 11	5 + PE	5
	73000014	-	8,5 – 11	5 + PE	20
	73000013	6	10,5 – 15,5	5 + PE	5
	73000015	-	10,5 – 15,5	5 + PE	20



Bauform LS1 F7 für Stiftkontakte

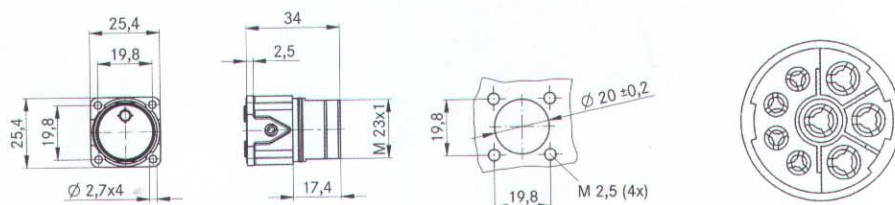
Style LS1 F7 for male contacts

Modèle LS1 F7, contacts mâles

Artikel part article	Art.-Nr. part No. N° art.	Kontakte inklusive contacts inclusive contacts inclusive	Kabelklemmung clamping range raccordement	Polbild poles pôles	VPE packing unit conditionnement
LS1 F7	73000020	6	8,5 – 11	5 + PE	5
	73000022	-	8,5 – 11	5 + PE	20
	73000021	6	10,5 – 15,5	5 + PE	5
	73000023	-	10,5 – 15,5	5 + PE	20

7.1 EPIC® CIRCON LS1

Rundsteckverbinder / Circular connector / Connecteur circulaire

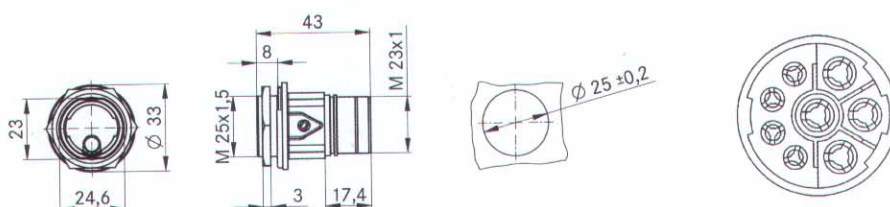


Bauform LS1 A1 für Stiftkontakte

Style LS1 A1 for male contacts

Modèle LS1 A1, contacts mâles

Artikel part article	Art.-Nr. part No. N° art.	Kontakte inklusive contacts inclusive contacts inclusive	Kabelklemmung clamping range raccordement	Polbild poles pôles	VPE packing unit conditionnement
LS1 A1	76004000	8	-	3 + PE + 4	5
	76004510	-	-	3 + PE + 4	20



Bauform LS1 G4 für Stiftkontakte

Style LS1 G4 for male contacts

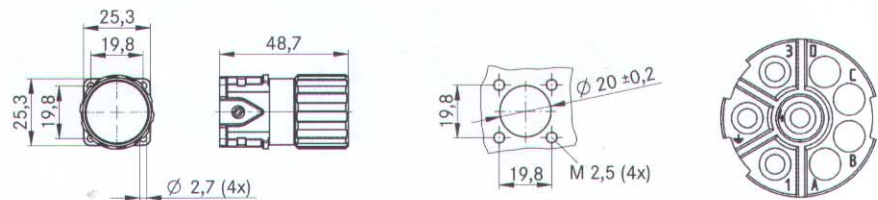
Modèle LS1 G4, contacts mâles

Artikel part article	Art.-Nr. part No. N° art.	Kontakte inklusive contacts inclusive contacts inclusive	Kabelklemmung clamping range raccordement	Polbild poles pôles	VPE packing unit conditionnement
LS1 G4	76154100	8	-	3 + PE + 4	5
	76154610	-	-	3 + PE + 4	20

7

7.1 EPIC® CIRC ON LS1

Rundsteckverbinder / Circular connector / Connecteur circulaire

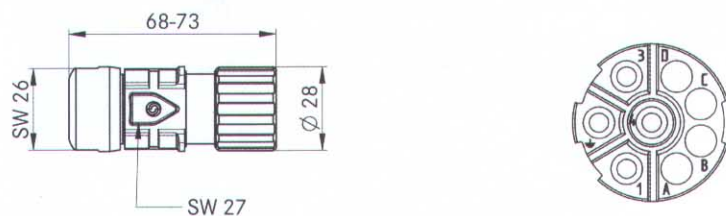


Bauform LS1 A6 für Buchsenkontakte

Style LS1 A6 for female contacts

Modèle LS1 A6, contacts femelles

Artikel part article	Art.-Nr. part No. N° art.	Kontakte contacts inclusive contacts inclusive	Kabelklemmung clamping range raccordement	Polbild poles pôles	VPE packing unit conditionnement
LS1 A6	76084000	8	-	3 + PE + 4	5
	76084510	-	-	3 + PE + 4	20

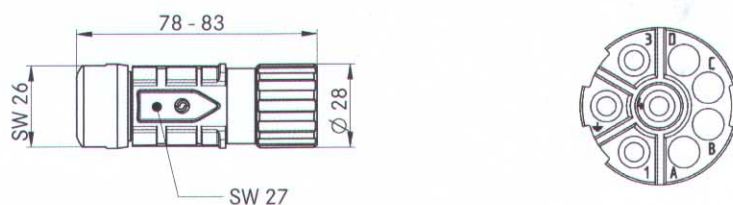


Bauform LS1 D6 kurz für Buchsenkontakte

Style LS1 D6 short version for female contacts

Modèle LS1 D6 courte, contacts femelles

Artikel part article	Art.-Nr. part No. N° art.	Kontakte inklusive contacts inclusive contacts inclusive	Kabelklemmung clamping range raccordement	Polbild poles pôles	VPE packing unit conditionnement
LS1 D6	73000024	8	8,5 – 11	3 + PE + 4	5
	73000026	-	8,5 – 11	3 + PE + 4	20
	73000025	8	10,5 – 15,5	3 + PE + 4	5
	73000027	-	10,5 – 15,5	3 + PE + 4	20



Bauform LS1 D6 für Buchsenkontakte

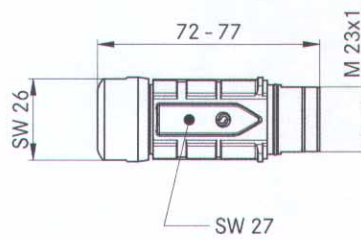
Style LS1 D6 for female contacts

Modèle LS1 D6, contacts femelles

Artikel part article	Art.-Nr. part No. N° art.	Kontakte inklusive contacts inclusive contacts inclusive	Kabelklemmung clamping range raccordement	Polbild poles pôles	VPE packing unit conditionnement
LS1 D6	73000000	8	8,5 – 11	3 + PE + 4	5
	73000002	-	8,5 – 11	3 + PE + 4	20
	73000001	8	10,5 – 15,5	3 + PE + 4	5
	73000003	-	10,5 – 15,5	3 + PE + 4	20

7.1 EPIC® CIRCON LS1

Rundsteckverbinder / Circular connector / Connecteur circulaire

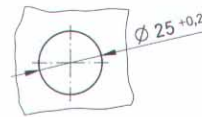
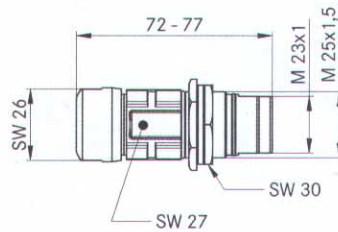


Bauform LS1 F6 für Stiftkontakte

Style LS1 F6 for male contacts

Modèle LS1 F6, contacts mâles

Artikel part article	Art.-Nr. part No. N° art.	Kontakte inklusive contacts inclusive contacts inclusive	Kabelklemmung clamping range raccordement	Polbild poles pôles	VPE packing unit conditionnement
LS1 F6	73000008	8	8,5 – 11	3 + PE + 4	5
	73000010	-	8,5 – 11	3 + PE + 4	20
	73000009	8	10,5 – 15,5	3 + PE + 4	5
	73000011	-	10,5 – 15,5	3 + PE + 4	20



Bauform LS1 F7 für Stiftkontakte

Style LS1 F7 for male contacts

Modèle LS1 F7, contacts mâles

Artikel part article	Art.-Nr. part No. N° art.	Kontakte inklusive contacts inclusive contacts inclusive	Kabelklemmung clamping range raccordement	Polbild poles pôles	VPE packing unit conditionnement
LS1 F7	73000016	8	8,5 – 11	3 + PE + 4	5
	73000018	-	8,5 – 11	3 + PE + 4	20
	73000017	8	10,5 – 15,5	3 + PE + 4	5
	73000019	-	10,5 – 15,5	3 + PE + 4	20

7

7.1 EPIC® CIRCON LS1

Rundsteckverbinder / Circular connector / Connecteur circulaire

Kontakte

Contacts








Contacts

Artikel part article	Art.-Nr. part No. N° art.	Version version version	für Bauform for model pour modèle	VPE packing unit conditionnement
LS1 A SCEM 1 mm AU 0,14 – 1,0 LS1 A SCEM 1 mm AU 0.14 – 1.0 LS1 A SCEM 1 mm AU 0,14 – 1,0	74033000	1 mm Stift 1 mm male 1 mm, mâle	A1	100
LS1 A SCEM 2 mm AU 0,5 – 2,5 LS1 A SCEM 2 mm AU 0.5 – 2.5 LS1 A SCEM 2 mm AU 0,5 – 2,5	74033100	1 mm Stift 2 mm male 1 mm, mâle	A1	100
LS1 D BCEMS 1 mm AU 0,14 – 1,0 LS1 D BCEMS 1 mm AU 0.14 – 1.0 LS1 D BCEMS 1 mm AU 0,14 – 1,0	74033500	1 mm Buchse Schlitz 1 mm female slot 1 mm, femelle à entaille	D6	100
LS1 D BCEMD 1 mm AU 0,14 – 1,0 LS1 D BCEMD 1 mm AU 0.14 – 1.0 LS1 D BCEMD 1 mm AU 0,14 – 1,0	74034500	1 mm Buchse Drahtfeder 1 mm female hyper boloid 1 mm, femelle à ressort	D6	100
LS1 D BCEMD 2 mm AU 0,5 – 2,5 LS1 D BCEMD 2 mm AU 0.5 – 2.5 LS1 D BCEMD 2 mm AU 0,5 – 2,5	74034600	2 mm Buchse Drahtfeder 2 mm female hyper boloid 2 mm, femelle à ressort	D6	100
LS1 F SCEM 1 mm AU 0,14 – 1,0 LS1 F SCEM 1 mm AU 0.14 – 1.0 LS1 F SCEM 1 mm AU 0,14 – 1,0	74034000	1 mm Stift 1 mm male 1 mm, mâle	F6/F7	100
LS1 F SCEM 2 mm AU 0,5 – 2,5 LS1 F SCEM 2 mm AU 0.5 – 2.5 LS1 F SCEM 2 mm AU 0,5 – 2,5	74034100	2 mm Stift 2 mm male 2 mm, mâle	F6/F7	100

Werkzeuge und Zubehör

Tools and Accessories

Outils et accessoires

Artikel part article	Art.-Nr. part No. N° art.	Bemerkungen remark remarques	VPE packing unit conditionnement	Bild picture image
Handcrimpzange Crimping tool Pince à sertir manuelle	11148000	im Servicekoffer with service case dans la mallette de réparation	1	
Locator für EPIC® CIRCON Locator for EPIC® CIRCON Localiseur pour EPIC® CIRCON	11148300		1	
LS1 Ausbau-Werkzeug für 1 mm Kontakte LS1 Removal tool for 1 mm contacts LS1 Outil d'équipement pour contacts de 1 mm	75017400	für Typ A1 for Typ A1 pour Type A1	1	
LS1 Ausbau-Werkzeug für 2 mm Kontakte LS1 Removal tool for 2 mm contacts LS1 Outil d'équipement pour contacts de 2 mm	75017500	für Typ A1 for Typ A1 pour Type A1	1	
LS1 A Schraubkappe M.F. LS1 A screw cap M.F. Capuchon à visser LS1 A M.F.	75018210	Metalldeckel für A1 Metal screw cap for A1 Couvercle métallique pour A1	20	
LS1 A, G, F Schraubkappe M.F. LS1 A, G, F screw cap M.F. Capuchon à visser LS1 A, G, F M.F.	75018310	Metalldeckel für A1, F6, F7 Metal screw cap for A1, F6, F7 Couvercle métallique pour A1, F6, F7	20	
LS1 D Schutzkappe LS1 D protection cap Capuchon de protection LS1 D	75007710	Kunststoffdeckel für D6 Plastic protection cap for D6 Couvercle en plastique pour D6	20	
LS1 A, B, F, G Schutzkappe LS1 A, B, F, G protection cap Capuchon de protection LS1 A, B, F, G	75007810	Kunststoffdeckel für A1, F6, F7 Plastic protection cap for A1, F6, F7 Couvercle en plastique pour A1, F6, F7	20	