

1.6 EPIC® H - B S

Einsätze / Inserts / Inserts

Technische Daten:

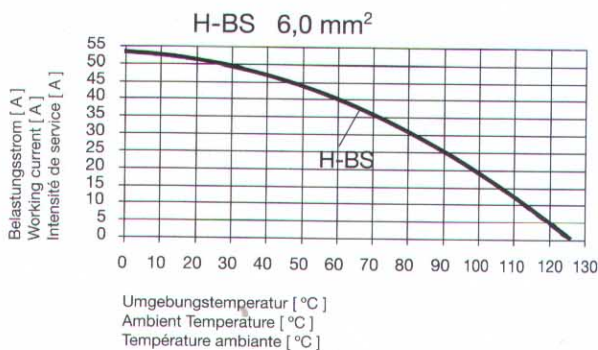
- Kontaktzahlen: 6, 12 (+ PE)
- Bemessungsspannung: VDE: 400 V EPIC® H-BS 6/12
UL: 600 V EPIC® H-BS 6/12
CSA: 600 V EPIC® H-BS 6/12
- Bemessungsstrom: VDE: 35 A EPIC® H-BS 6/12
UL: 35 A EPIC® H-BS 6/12
CSA: 35 A EPIC® H-BS 6/12
- Verschmutzungsgrad: 3
- Bemessungsstoßspannung: 6 kV
- Leitungsanschluss: Schraubanschluss: 0,5 – 6 mm²
- Temperaturbereich: -40 °C bis +100 °C,
kurzzeitig bis +125 °C
- Kontakte: Kupferlegierung, hartversilbert
- Durchgangswiderstand: <2 mOhm
- Steckzyklen: 100 (je nach Anwendungsfall,
höhere Steckzyklen möglich)

Technical Data:

- Number of contacts: 6, 12 (+ PE)
- Rated voltage: VDE: 400 V EPIC® H-BS 6/12
UL: 600 V EPIC® H-BS 6/12
CSA: 600 V EPIC® H-BS 6/12
- Rated current: VDE: 35 A EPIC® H-BS 6/12
UL: 35 A EPIC® H-BS 6/12
CSA: 35 A EPIC® H-BS 6/12
- Pollution degree: 3
- Dimensioning transient: 6 kV
- Termination technique: Screw termination: 0,5 – 6 mm²
- Temperature range: -40 °C – +100 °C,
for a short term up to +125 °C
- Contacts: Copper alloy, silver plated
- Contact resistance: <2 mOhm
- Mating cycles: 100 (higher mating cycles
depends on the application)

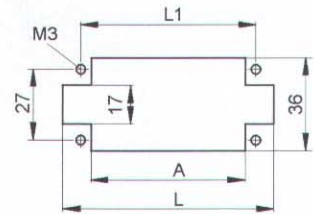
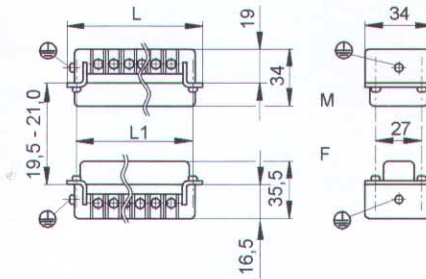
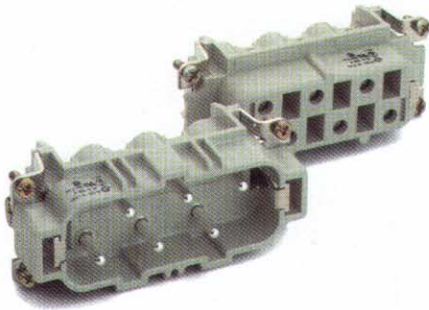
Caractéristiques techniques:

- Nombre de contacts: 6, 12 (+ PE)
- Tension nominale: VDE: 400 V EPIC® H-BS 6/12
UL: 600 V EPIC® H-BS 6/12
CSA: 600 V EPIC® H-BS 6/12
- Courant nominale: VDE: 35 A EPIC® H-BS 6/12
UL: 35 A EPIC® H-BS 6/12
CSA: 35 A EPIC® H-BS 6/12
- Degré de pollution: 3
- Dimensionnement de choc: 6 kV
- Raccordement: Raccord à visser: 0,5 – 6 mm²
- Gamme de température: -40 °C – +100 °C,
à court terme jusqu'à +125 °C
- Contacts: Alliage cuivre, argenté
- Résistance de passage: <2 mOhm
- Cycles d'insertion: 100 (selon le cas cycles
d'insertion plus important)



1.6 EPIC® H - B S

Einsätze / Inserts / Inserts



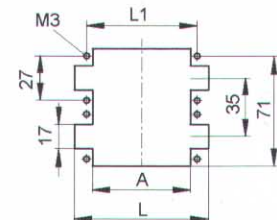
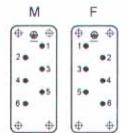
Montageausschnitt
Panel cut-out
Découpe de montage

H-BS 6

Artikel part article	Version version version	Art.Nr. part No. N° art.	Drahtschutz wire protection protection de fil	Kontakte contacts contacts	L	L1	A
H-BS 6 SS	Stift / male / mâle	10170000	●	6	84,5	77,5	71
H-BS 6 BS	Buchse / female / femelle	10171000	●	6	84,5	77,5	71

Gehäuse / Housings / Boîtiers:
3.2: H-B 16

Ansicht anschlussseitig
View from cable side
Vue côté raccordement



Montageausschnitt
Panel cut-out
Découpe de montage

H-BS 12

Artikel part article	Version version version	Art.Nr. part No. N° art.	Drahtschutz wire protection protection de fil	Kontakte contacts contacts	L	L1	A
H-BS 6 SS 1-6	Stift / male / mâle	10170000	●	12	84,5	77,5	71
H-BS 6 SS 7-12		10170600	●		84,5	77,5	71
H-BS 6 BS 1-6	Buchse / female / femelle	10171000	●	12	84,5	77,5	71
H-BS 6 BS 7-12		10171600	●		84,5	77,5	71

Gehäuse / Housings / Boîtiers:
3.2: H-B 32

Ansicht anschlussseitig
View from cable side
Vue côté raccordement

