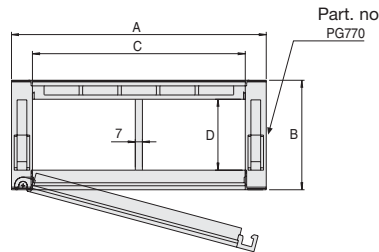


Serie Medium

SR770A Nylon Cable Chain

Inner height (D) 60 mm

Construction by sidebands with antifriction pivot.
Cover removable from inner radius.
Movable separators can be installed to create different compartments.



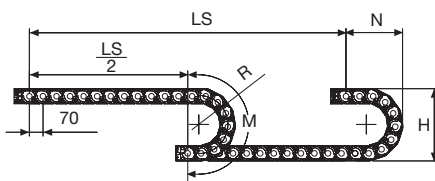
Separator

- Unassembled	Part. no S770A
- Assembled	Part. no S770AMC

Technical characteristics when self-supported

Speed	6 m/s
Acceleration	30 m/s ²

For higher requirements please consult our technical dept.



Length of chain (L)

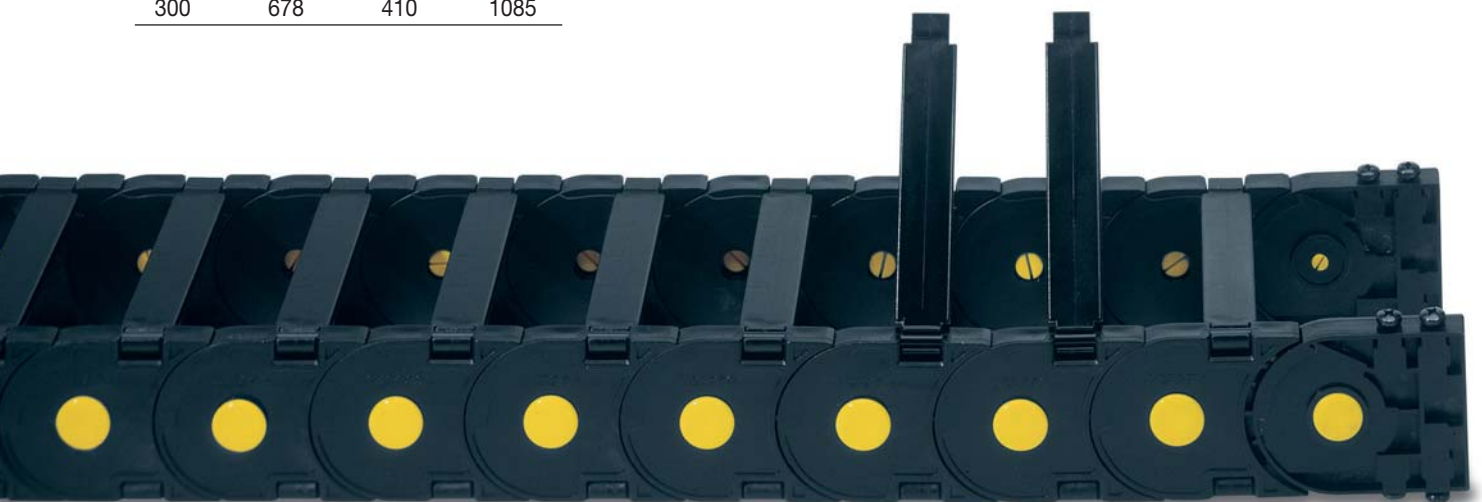
Half travel distance ($\frac{LS}{2}$) plus length of curve (M)

$$L = \frac{LS}{2} + M$$

R	H	N	M
mm	mm	mm	mm
150	378	260	615
200	478	310	770
250	578	365	930
300	678	410	1085

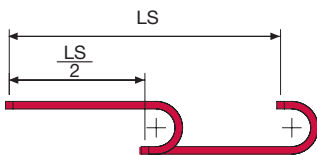
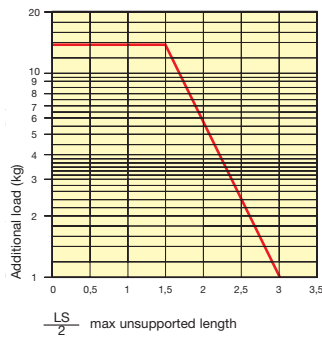
A	B	C	D	R	Weight/m	Chain
mm	mm	mm	mm	mm	Kg	Part Number
80	78	45	60	150-200-250-300	2,25	SR770A045 □□□ *
91	78	56	60	150-200-250-300	2,25	SR770A056 □□□ *
105	78	70	60	150-200-250-300	2,31	SR770A070 □□□ *
111	78	76	60	150-200-250-300	2,32	SR770A076 □□□ *
125	78	90	60	150-200-250-300	2,36	SR770A090 □□□ *
130	78	95	60	150-200-250-300	2,36	SR770A095 □□□ *
137	78	102	60	150-200-250-300	2,38	SR770A102 □□□ *
147	78	112	60	150-200-250-300	2,39	SR770A112 □□□ *
155	78	120	60	150-200-250-300	2,43	SR770A120 □□□ *
166	78	131	60	150-200-250-300	2,46	SR770A131 □□□ *
180	78	145	60	150-200-250-300	2,49	SR770A145 □□□ *
205	78	170	60	150-200-250-300	2,55	SR770A170 □□□ *
230	78	195	60	150-200-250-300	2,62	SR770A195 □□□ *
241	78	206	60	150-200-250-300	2,65	SR770A206 □□□ *
255	78	220	60	150-200-250-300	2,68	SR770A220 □□□ *
282	78	247	60	150-200-250-300	2,75	SR770A247 □□□ *
291	78	256	60	150-200-250-300	2,77	SR770A256 □□□ *
342	78	307	60	150-200-250-300	2,88	SR770A307 □□□ *
364	78	329	60	150-200-250-300	2,94	SR770A329 □□□ *
392	78	357	60	150-200-250-300	3,01	SR770A357 □□□ *

*Complete the code by inserting the value of the radius (R): Ex. SR770A045 [1][5][0]
Chain equipped with aluminium rods every pitch: complete the code by inserting the letter D.
Ex. SR770A045150 [D]



Self-Supporting Capacity Diagram

The maximum length of the self-supporting capacity ($\frac{LS}{2}$) in relationship to the weight of the cables and hoses contained per linear metre.



For applications with $\frac{LS}{2}$ and weights not included in the area of the diagram showing self-supporting capacity, verify the possible use of support rollers (see page 30).

End Brackets

The end brackets set allows the two ends of the chain to be attached to the equipment.

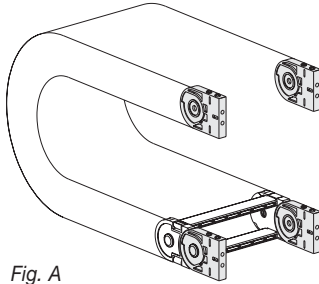
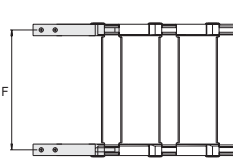
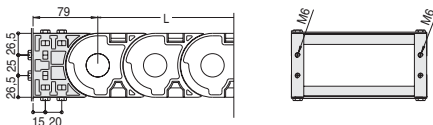


Fig. A

End brackets can be mounted in any position. (Fig. A)



Chain	F mm
SR770A C=45	61
SR770A C=56	72
SR770A C=70	86
SR770A C=76	92
SR770A C=90	106
SR770A C=95	111
SR770A C=102	118
SR770A C=112	128
SR770A C=120	136
SR770A C=131	147
SR770A C=145	161
SR770A C=170	186
SR770A C=195	211
SR770A C=206	222
SR770A C=220	236
SR770A C=247	263
SR770A C=256	272
SR770A C=307	323
SR770A C=329	345
SR770A C=357	373

Nylon Type Part Numbers

Complete Set Assembled

Chain Type	End Brackets Set
SR770A...	AN770AKM

Complete Set Unassembled

Chain Type	End Brackets Set
SR770A...	AN770AK

Complete Set Unassembled

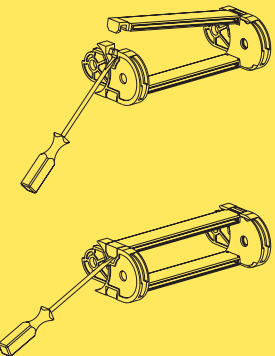
Chain Type	Tiewrap Clamp Part Number
SR770A...	SFC770A □□□ *

*Complete the code by inserting the value or the quote (C).

Serie Medium

SR770A

Nylon Cable Chain



How to open the cover.

Special tool to remove the connecting pivots: part number PZ010.

For further information please consult Brevetti Stendalto's Technical Office